

PRESS RELEASE

Anne-Flore Cabanis
Installations, paintings, drawings

Exhibition	05.09 – 19.10.2019
Opening reception	Thursday 5 September 2019, from 6pm to 9pm, the artist will be present

For its September reopening exhibition, the Esther Woerdehoff Gallery will offer an escapade from photography, showing paintings and drawings by French artist Anne-Flore Cabanis.

Anne-Flore Cabanis, who graduated from the Ecole Nationale Supérieure des Beaux-Arts in 2007, considers drawing as the starting point of her artistic practice. She draws freehand, with a pen, in a single line that never crosses itself and progresses on the paper for several hours, days, sometimes weeks, until it creates organic shapes from a geometric tracing. On some works, the artist gradually dilutes the colour, in a subtle gradation from one shade to another, over the entire surface of the paper. For her paintings, she uses the paintbrushes' reservoir to apply colour in a vertical movement, one shade at a time, in the same search for a gestural expression that creates the work through time and repetition.

Everything is performance in Anne-Flore Cabanis' works: a slow, progressive and repeated movement that gives birth to form, volume or colour, an invitation to meditation on the flows of the body, of the gaze and of the mind.

Her exploration of the drawing is also given volume and space through in situ installations made with adhesive tapes or stretched elastic bands. Since 2004, she has worked with the architecture of public spaces, starting with an installation at JFK airport.

The gallery's courtyard will host one of these installations, exceptionally designed for the exhibition.

For any information and request for visuals, please contact
Florence Pillet - florence@ewgalerie.com

Press visuals



Anne-Flore Cabanis, *Mouvements*, 2019
Acrylic on canvas, 300 x 200 cm

The use of images is exclusively reserved for the promotion of the exhibition and valid up to its end.
Obligatory mention: © Anne-Flore Cabanis, Courtesy Galerie Esther Woerdehoff

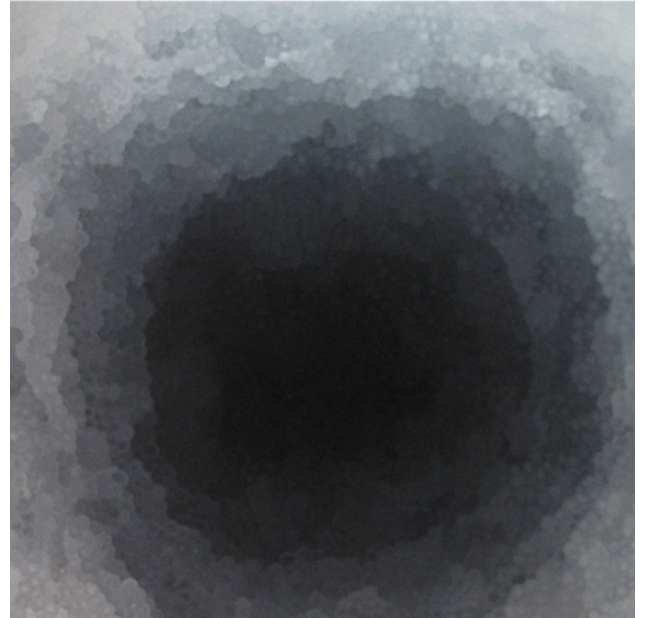
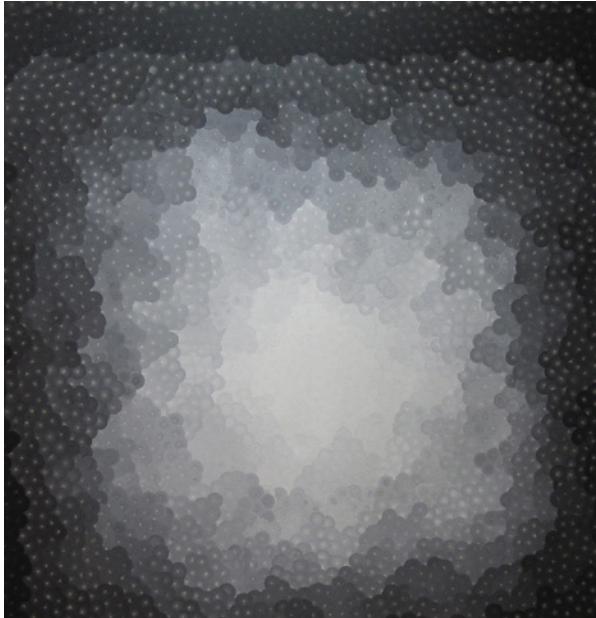
Press visuals



Anne-Flore Cabanis, *Jaune à vert*, 2013
Coloured inks on paper, one line, 75 x 75 cm

The use of images is exclusively reserved for the promotion of the exhibition and valid up to its end.
Obligatory mention: © Anne-Flore Cabanis, Courtesy Galerie Esther Woerdehoff

Press visuals



Anne-Flore Cabanis, *Plein L* and *Plein S*, 2010
Acrylic on canvas, 190 x 190 cm each

The use of images is exclusively reserved for the promotion of the exhibition and valid up to its end.
Obligatory mention: © Anne-Flore Cabanis, Courtesy Galerie Esther Woerdehoff

BIOGRAPHY

Artist

Anne-Flore Cabanis

Anne-Flore Cabanis was born in Nice in 1979, she lives and works in Paris. After a preparatory training with the artist Annette Huster, Anne-Flore Cabanis followed the workshops of artists Bernard Piffaretti, Sylvie Fanchon, Dominique Figarella (P2F workshop) and Philippe Cognée at the École Nationale Supérieure des Beaux Arts de Paris from which she graduated in 2007.

Since 2001 she has been making spontaneous drawings with a pencil on paper. This work follows simple rules: a line drawn by hand that does not cross over and whose angles are always right angles. The result is organic and suspends the focus in an introspective floating. After the experience of a study trip to Brazil in 2005, she translated this language into space by making it take different forms: performances, sound pieces, in situ collages with adhesive tape and volume installations of tight lines.

Anne-Flore Cabanis' in situ interventions play with the architecture of private or public places. By breaking a visual silence, they reveal the presence of selected invisible movements. The artist creates apparitions and disappearances of lines and colours that give a reading, a direction, a moment of reflection on the circulation of the body, the gaze or the mind. She made her first in situ adhesive tape collage during an exhibition in Terminal 5 of JFK Airport in New York in 2004.

Her projects have recently led her to perform at the Centquatre in Paris, in the Ixelles district of Brussels in Belgium, in a college in Aubervilliers (93), at the Metz station, at the Filature (Mulhouse national scene) and abroad in the city of Taipei, Taiwan.

Solo shows**2019**

Galerie Esther Woerdehoff, Paris
Magazzino Gallery of the Palazzo Contarini Polignac, year of the Biennale of Contemporary Art, Venice, Italy
Couleurs élastiques, in situ installation (with elastics and adhesives) interactive *immersion* - Centre Pompidou Metz

2018

Linea, installation of straps on the facade of the Musée des Beaux Arts de Rennes
Equilibre, fresco and floor painting on a site of the Grand Paris Express in La Plaine Saint-Denis

2016

Palimpsestes, drawings - Galerie Planète Rouge, Paris
Tarmac, installation of elastics in tension outdoors, Plaisance du Gers

2015

Somme, drawings, Galerie Planète Rouge, Paris
Space Bound, in situ installation, Taipei Artist Village, Taipei, Taiwan
Droites Courbes, Couloir, drawings, in situ painting, private apartment, Paris

2014

Vibration, in situ installation, Galeries Lafayette Haussmann, Paris
Space Bound, installation in situ, Taipei Artist Village space, Taipei, Taiwan
Droites courbes, Couloir, drawings, in situ painting, private apartment, Paris

2013

Chronotopia, drawings, in situ drawings, ArchiRAAR gallery, Brussels, Belgium
Somme, drawings, adhesive installations, video, performance, Vincenz Sala Gallery, Paris

2012

Connections, in situ installations, drawing, Cenquatre, Paris
Rebonds, in 7 parts, in situ installations, La Filature, Mulhouse

2010

Altitude Urbaine, drawings, in situ adhesive installation, video, Appartellerie Paris 1=2 drawings, installation of adhesive in situ, Galerie Annette Huster, Paris

2009

Stock Market, drawings, Ephemeral project at the Galerie Bamyas, Paris

2004

Détruire, C'est Bruital, performance, ENSBA, Paris

2003

Enjambements, performance, drawings, adhesive installation in situ, ENSBA, Paris

**Group shows
(selection)**
2019

Art Paris, with Galerie Esther Woerdehoff, Grand Palais, Paris
By-Collectors#1, Drawings, paintings, Curated by Clément Sauvoy and Yohann Grandisre, La Montgolfière, Paris

2018

The Hidden South, in situ Installation: *Two Color Gradients*, curated by Eva Lin, Taitung, Taiwan
La Collection Bic, two ballpoint pen drawings, curated by Hervé Mikaeloff and Ingrid Pux, Centquatre, Paris
La Topologie Mise En Cage, imaginary in situ installation, curated by Franck Ancel and 3 Lieux Productions, galerie du Pavé d'Orsay, Paris
Aufzeichnen, Drawings, galerie Vincenz Sala, Berlin
Very Fun Park - Fubon Art Festival 2018, in situ Installation: Triangles, Taipei, Taiwan
Matière Noire, curated by Frédéric Mathevet, galerie Planète Rouge, Paris

2017

Parallax, in situ installation: *Guide*, Curated by Eva Lin, Yilan County, Taiwan
Kairos, Drawings, curated by Christiane Courbon and Arafat Sadallah, Mac Arteam, Aix-en-Provence

2016

Pleins Feux, in situ installation and drawings, with D. Graham, J. Holzer, M. Laurette, F. Gygi, Anri Sala, Loft-Lastic, Ivry sur Seine
Drawing Now, galerie Vincenz Sala (Berlin, Paris), Carreau du Temple, Paris

2015

Portes Ouvertes, in situ installation, Élan, Ivry sur Seine

100 Years 100 Artists, Galerie Sobering, Paris

Drawing Now, Galerie Vincenz Sala (Berlin, Paris), Carreau du Temple, Paris

2014

Group Show, drawings, paintings, galerie Caroline Tresca, Paris

Why Not?, video installation, Taipei Artist Village, Taipei, Taiwan

2012

Wait&See, Installation of adhesives in situ, Nice airport

Entrelacs, Sound installation with Nicolas Charbonnier, Talmart gallery, Paris

Jardins en Métamorphose, In situ installation, Etirements, Thiais

Made In Paper, Drawings, Exit Contemporary Art Gallery, Boulogne-Billancourt

2011

New Deadlines, with Zevs, Drawing, installation of adhesive in situ and video, Musée en Herbe, Paris

Espaces, Paintings and installation of elastics in situ, Exit Art Contemporain gallery, Boulogne-Billancourt

Night Ouf #1 & #2, Installations: *Au Delà, Route El28*, Centquatre-Paris

2010

En Vrac #1, Paintings, drawings, 1st installation of stretched elastics, Paris

2008

Group Show, Paintings, drawings. Two exhibitions, Everydaysgallery, Paris

Group Show, Painting, «Collision de Rêves» with VLP and Raynald Driez, Galerie Déborah Zafman, Paris

2004

Terminal Five, D.E.A.D., Sound performance and adhesive installation in situ:

“Terminal Five lives a rebirth”. Artists: V. Beecroft, D. Graham, J. Holzer, M.

Laurette, F. Gygi, Anri Sala, etc., JFK Airport, New York, USA

Collections

La Collection BIC

Fondation Emerige